

Balconette

INFINITY SCREEN – INSTALLATION GUIDE

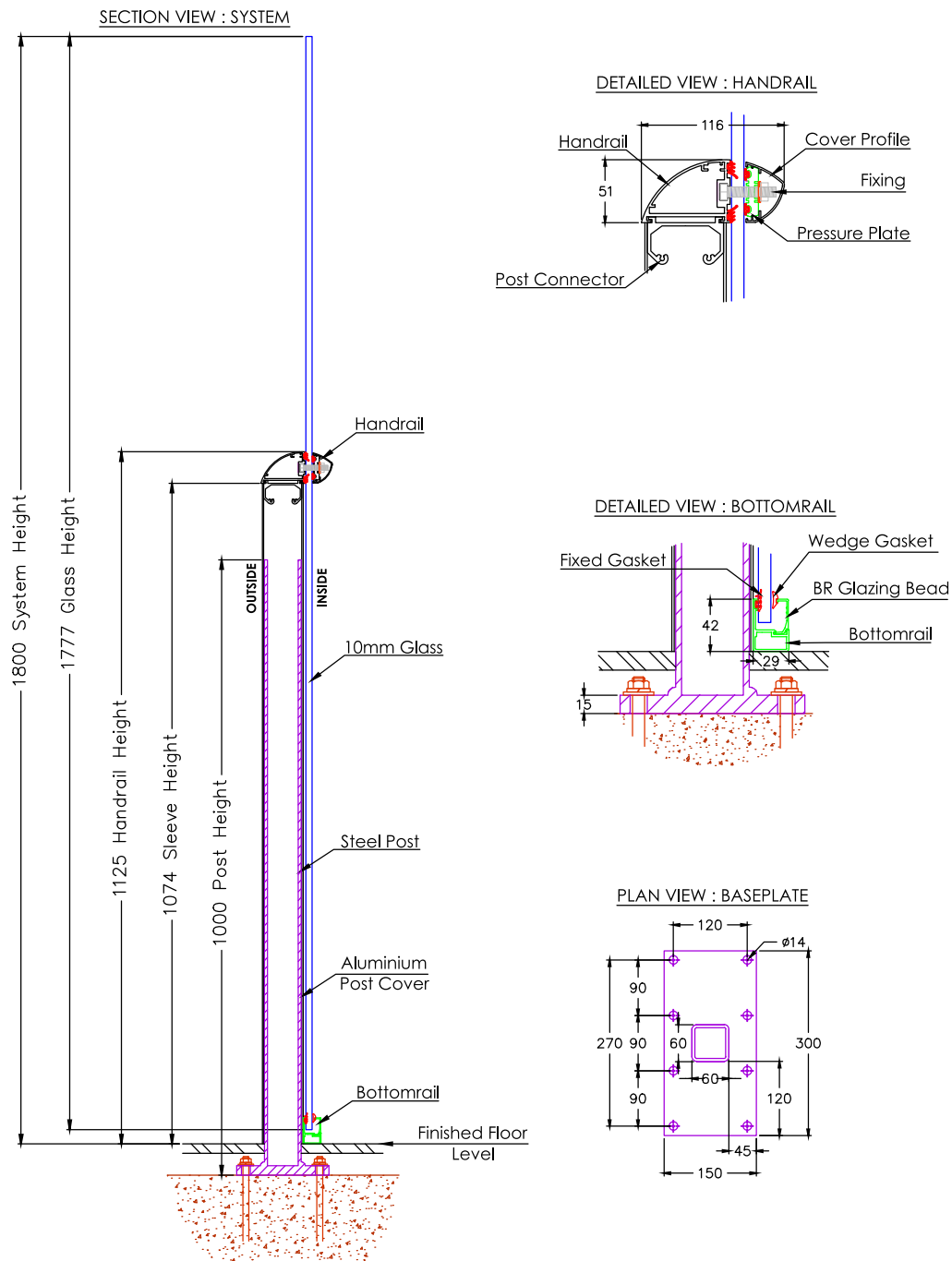
UNLESS OTHERWISE STATED ALL DIMENSIONS IN MILLIMETERS AND APPLY TO STANDARD HEIGHT SYSTEMS.
DO NOT SCALE FROM ANY DRAWINGS.

BALCONY SYSTEM SOLUTIONS LTD. UNIT 6 SYSTEMS HOUSE, EASTBOURNE ROAD, BLINDLEY HEATH, SURREY, RH7 6JP
TEL: 01342 410 411 FAX: 01342 410 412 WWW.BALCONETTE.CO.UK

Before you start:

- Check you have all the parts of the order.
- Check the height of the glass.
- Check the height of the posts(s) (if applicable).
- Check both these heights against the required height on site making sure they are correct before assembling.
- Read and understand this installation guide before starting.

Infinity Balustrade - Below Finished Floor Level System Details



Panel widths up to 500mm: 2 bolts
 Panel widths 501-800mm: 3 bolts
 Panel widths 801-1100mm: 4 bolts
 Panel widths 1101-1400mm: 5 bolts



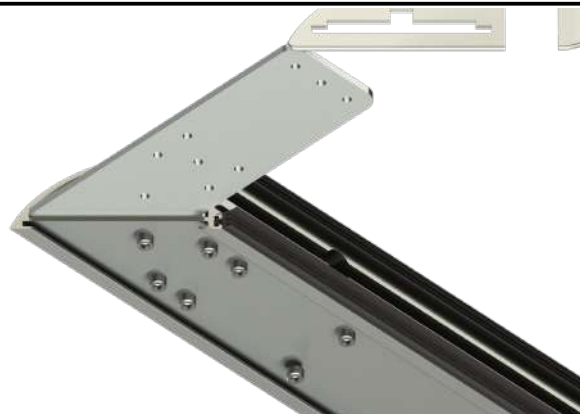
01) Slide the correct number of M8x40mm bolts into the handrail profile for the balustrade section.



02) Prepare to assemble the handrail corner (if applicable).



03) Slide the corner bracket into one of the handrails.



04) Fix the corner bracket to the handrail with seven 4.8x19mm socket cap self tapping screws.



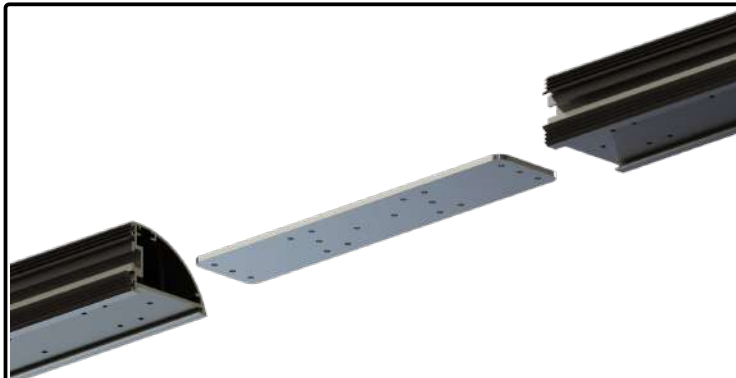
05) Slide the mitre protection plate onto the exposed corner bracket.



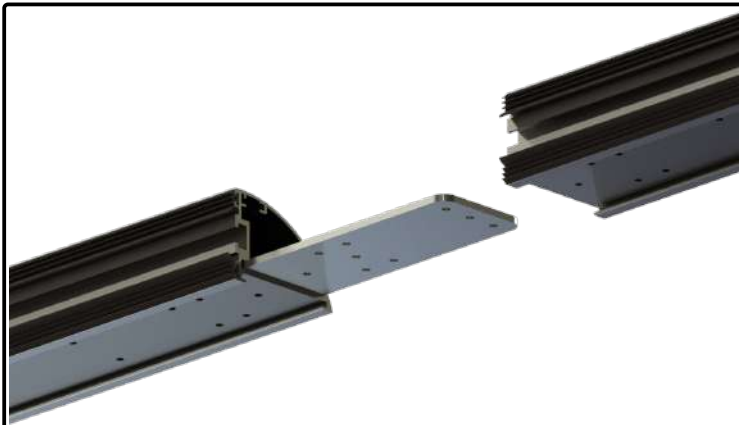
06) Slide the handrail onto the exposed corner bracket.



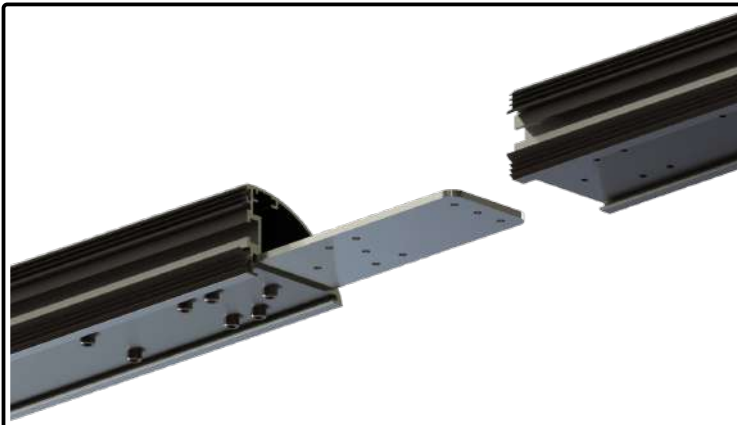
07) Fix the corner bracket to the handrail with seven 4.8x19mm socket cap self tapping screws.



08) Prepare to assemble the straight handrail joint (if applicable).



09) Slide the bracket into one of the handrails.



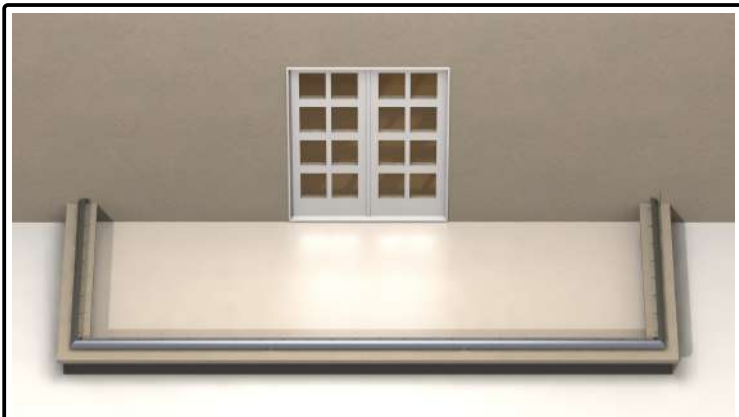
10) Fix the bracket to the handrail with seven 4.8x19mm socket cap self tapping screws.



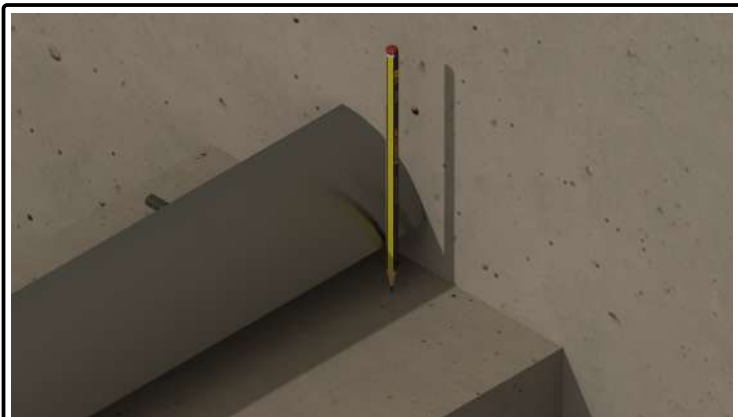
11) Slide the handrail onto the exposed bracket.



12) Fix the bracket to the handrail with seven 4.8x19mm socket cap self tapping screws.



13) Place the assembled handrail on the floor in position to ensure the dimensions and shape fit.

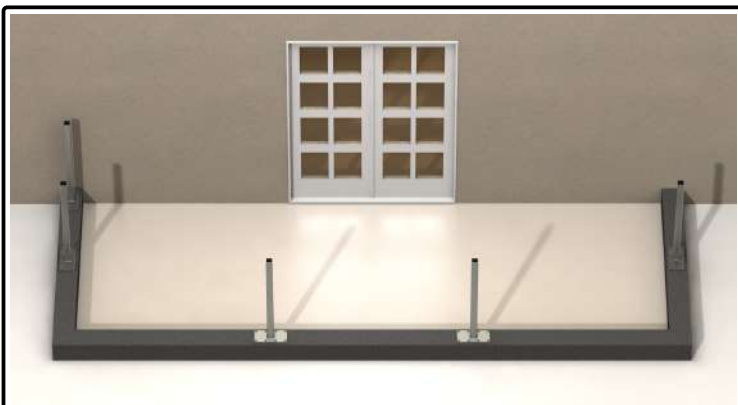


14) Mark lines on the floor outlining the handrail for use later in the install then move the handrail to a safe location.

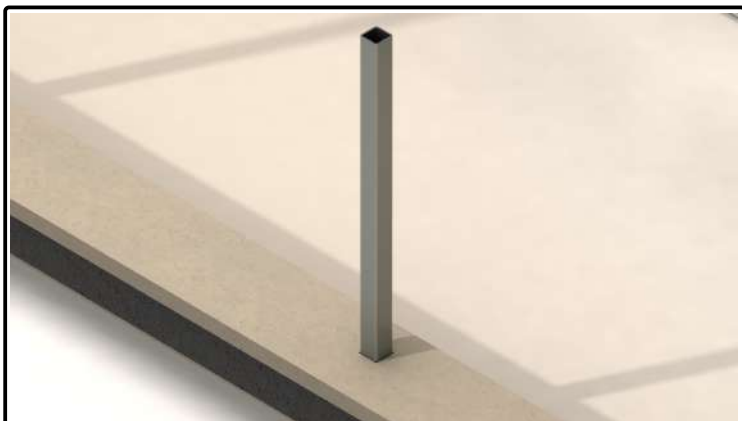
Primary Post Installation: (where required)



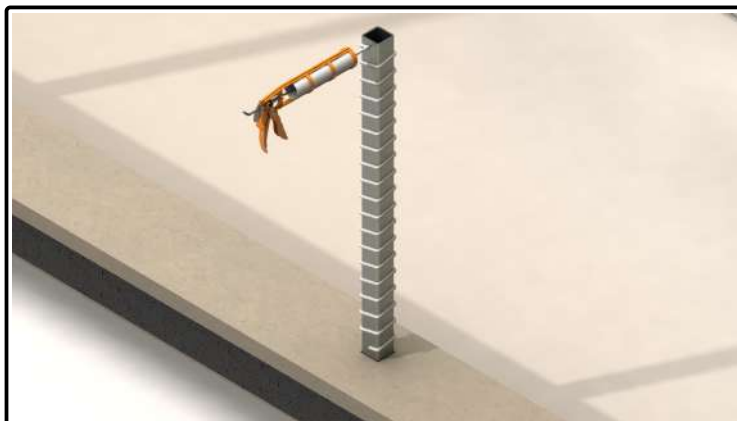
15) Position the primary post as per the drawings. Using appropriate fixings, fix the post(s) firmly to the structure making sure they are perfectly vertical.



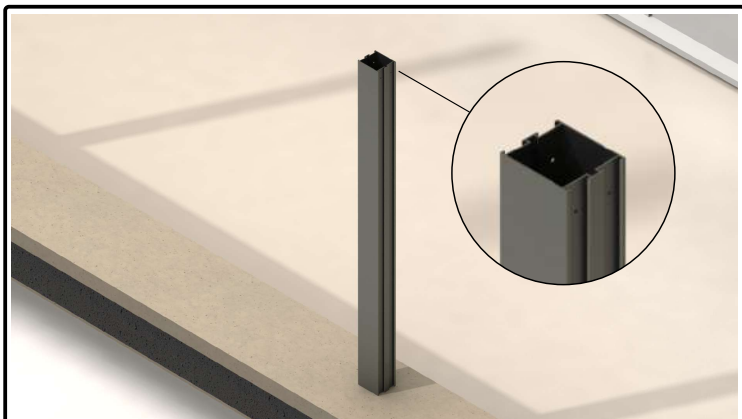
16) In this fashion install all primary posts.



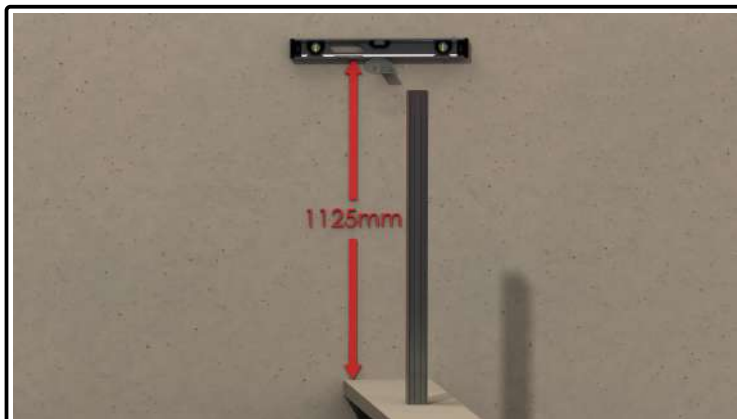
17) Complete the flooring, this should completely conceal the baseplate and fixings.



18) Apply a thick bead of silicone sealant around the primary steel post in a spiral fashion.



19) Slide the aluminium post sleeve over the primary post. Ensure the cover is seated onto the finished floor level.



20) Using a spirit level mark the system height and with appropriate fixings, fix the wall bracket to the structure.

Handrail Installation:



21) Lower the handrail onto the wall bracket, post connectors will slide inside the aluminium post sleeve.



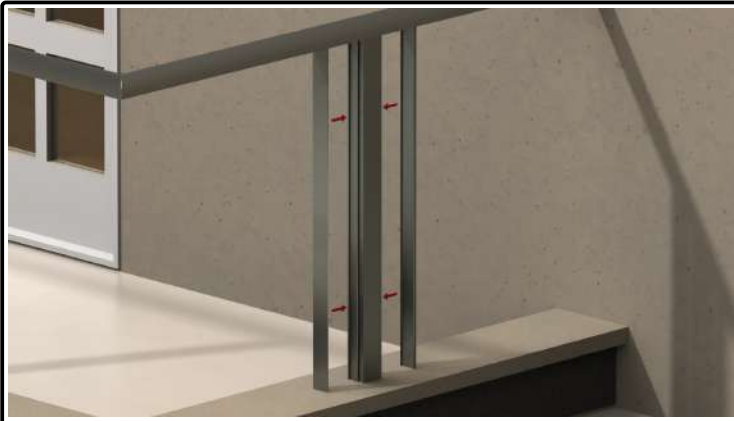
22) Drill 5.5mm holes through the bracket into the handrail.



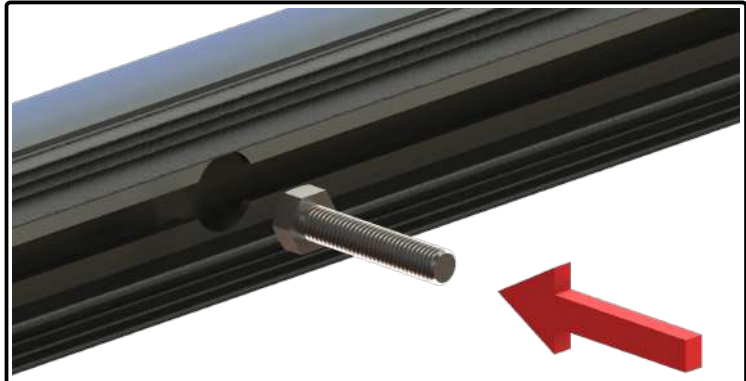
23) Fix the handrail to the bracket with two 6.3x25mm socket cap self tapping screws.



24) Fix the post sleeve to the post connector with four 4.2x13mm countersunk self tapping screws (two per side).

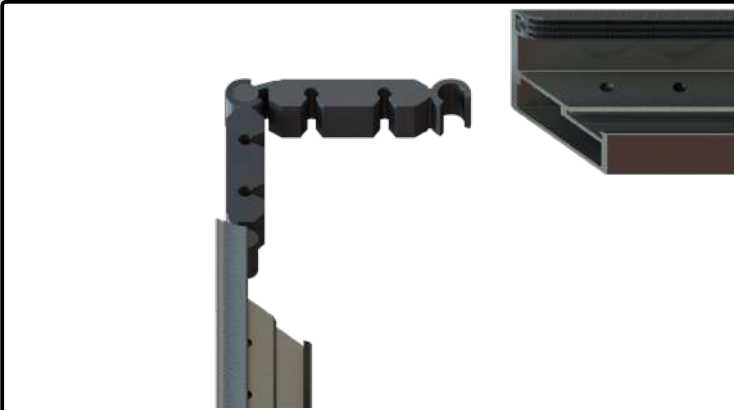


25) Clip in two post covers per post sleeve.



26) Double check the M8x40mm bolt quantity, you may use the bolt access hole to add or remove bolts if required.

Bottomrail Assembly:



27) Prepare to assemble the bottomrail corner (if applicable).



28) Slide the bottomrail connector into one of the bottomrails.



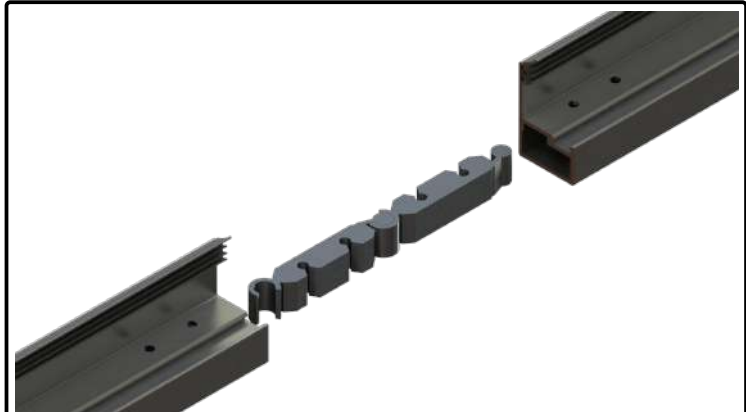
29) Fix the bottomrail connector to the bottomrail with two 4.8x13mm socket cap self tapping screws.



30) Slide the bottomrail onto the exposed bottomrail connector.



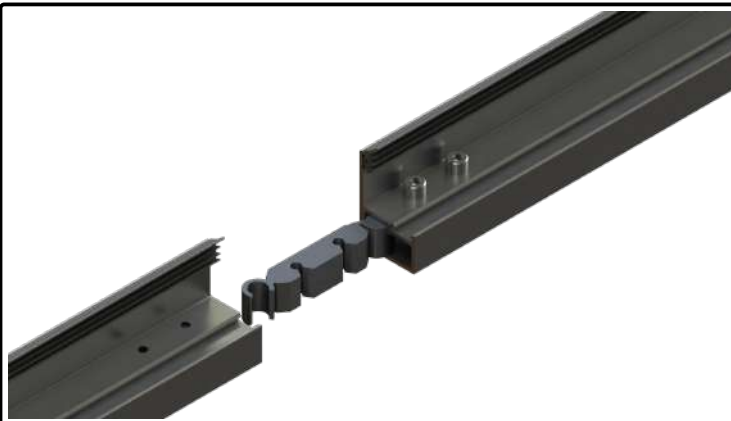
31) Fix the bottomrail connector to the bottomrail with two 4.8x13mm socket cap self tapping screws.



32) Prepare to assemble the straight bottomrail joint (if applicable)



33) Slide the bottomrail connector into one of the bottomrails.



34) Fix the bottomrail connector to the bottomrail with two 4.8x13mm socket cap self tapping screws.

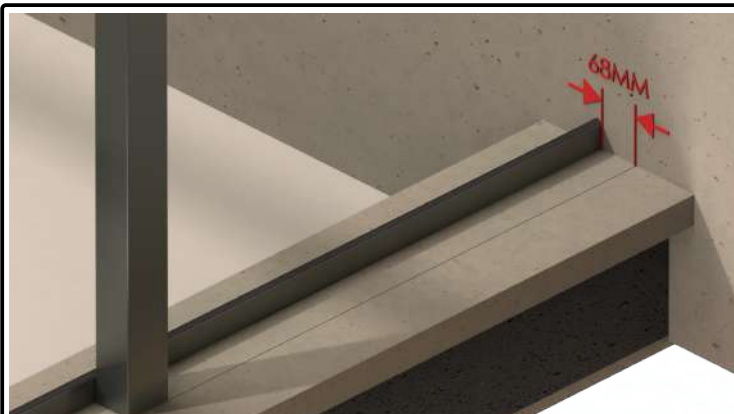


35) Slide the bottomrail onto the exposed bottomrail connector.

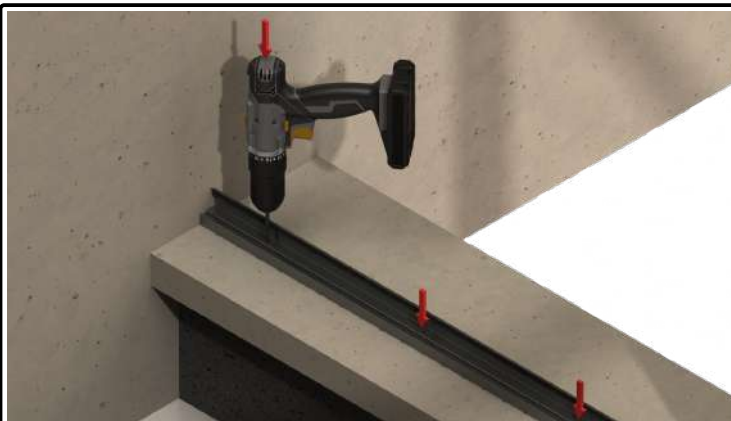


36) Fix the bottomrail connector to the bottomrail with two 4.8x13mm socket cap self tapping screws.

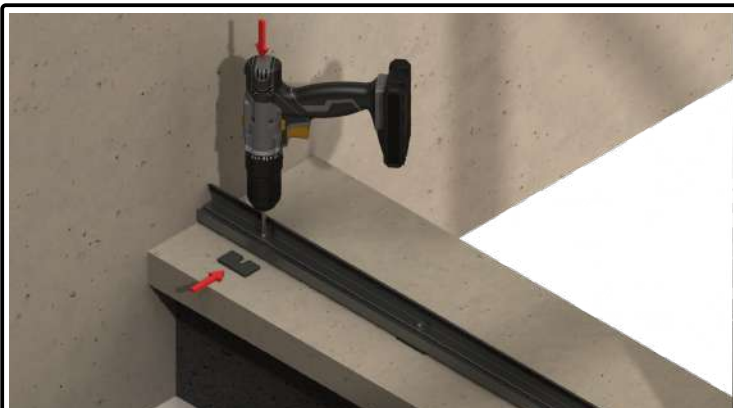
Bottomrail Installation:



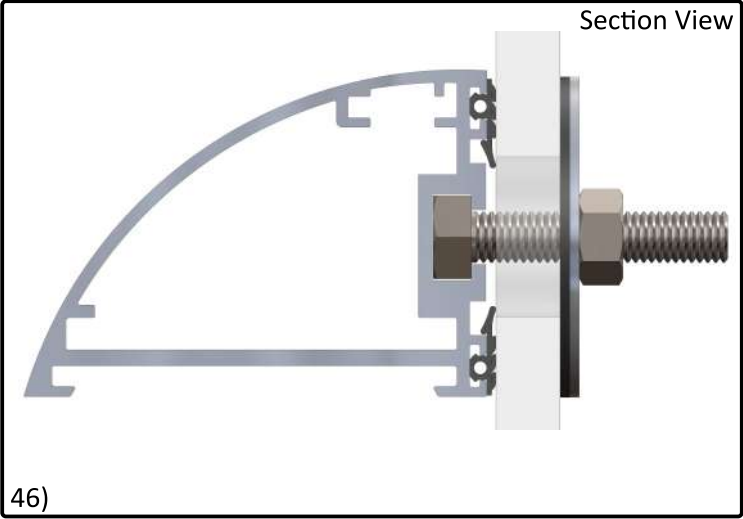
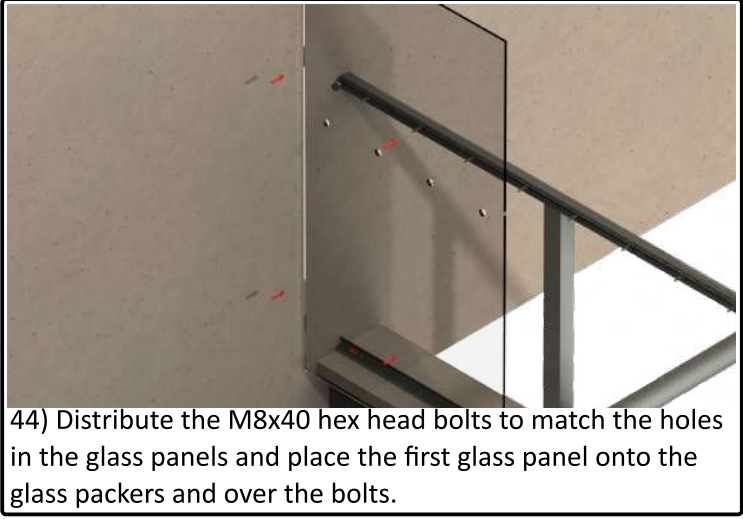
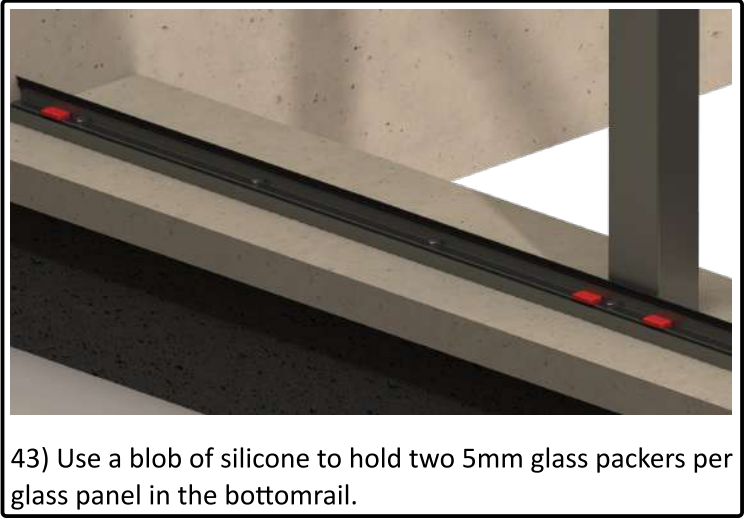
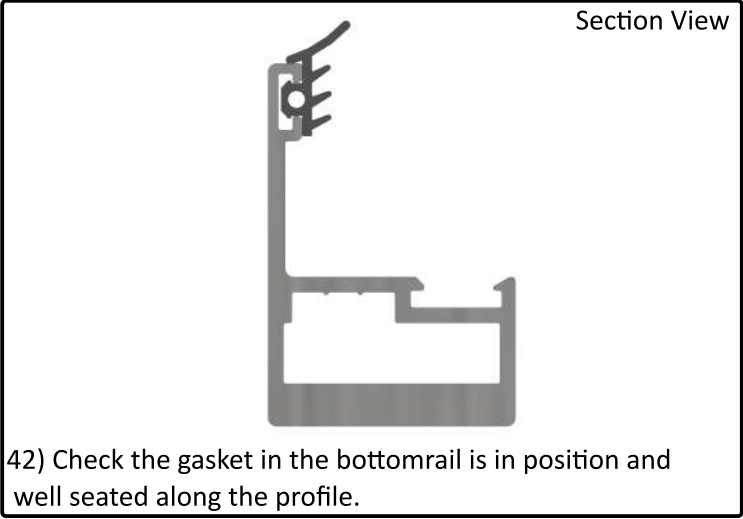
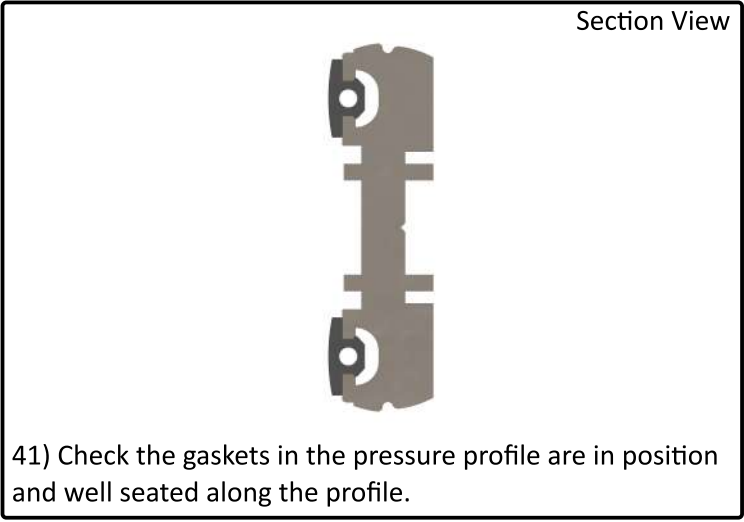
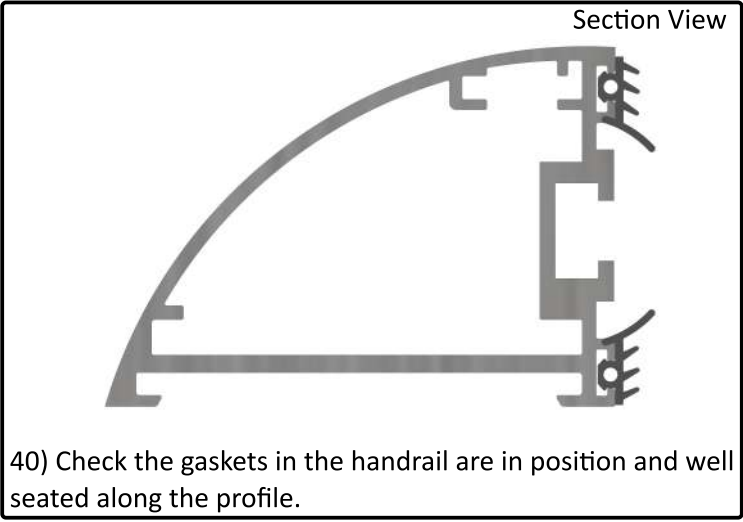
37) Position the bottomrail 68mm in from the line marked earlier. If the system has posts it will sit up against the post sleeve.



38) Drill into the structure through the bottomrail.

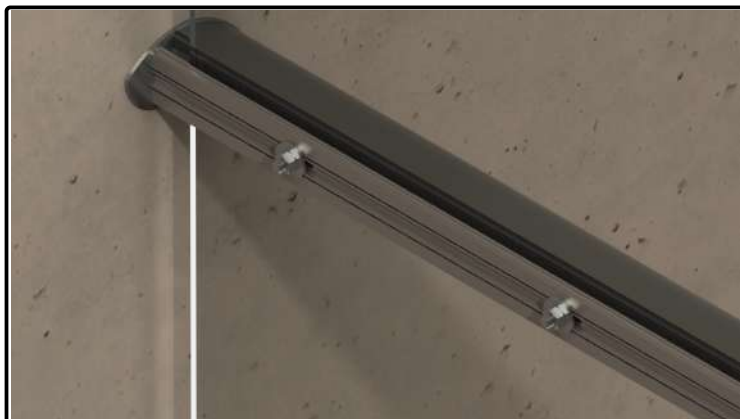


39) Fix the bottomrail to the structure with appropriate fixings. If you have requested 5mm drainage spacers position them under the bottomrail around each fixing.

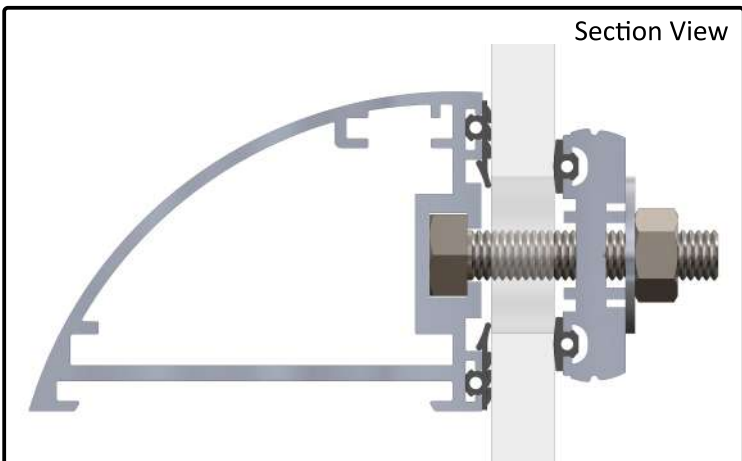




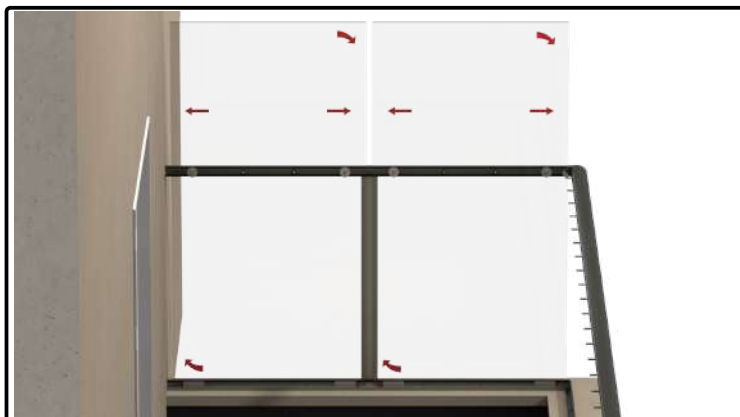
48) Support the glass panels and remove the temporary washers and nuts.
Offer up the pressure profile onto the bolts.



49) Secure the pressure profile with M8x25mm metal washers and M8 nuts.



50)



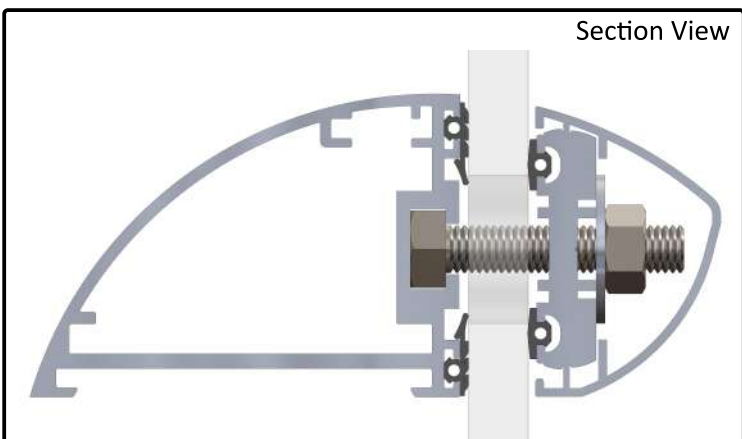
51) Align the glass panels to have correct glass gaps, use additional glass packers to level the panels if required.
Once the panels are aligned tighten down the M8 nuts.



52) Apply a continuous silicone bead to fill the void between the glass panels and the bottom rail.



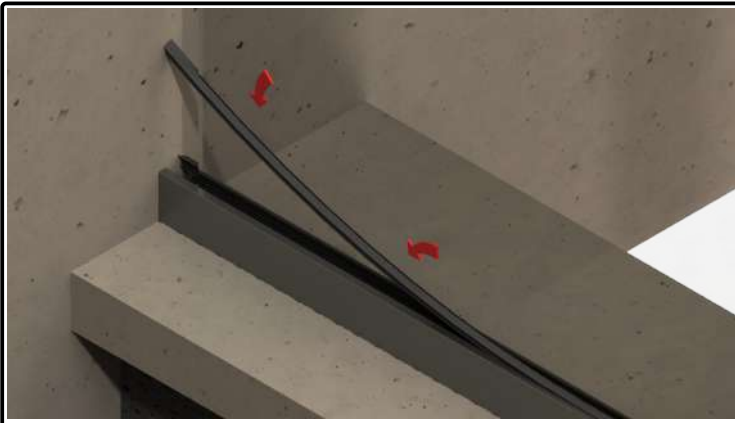
53) Clip the handrail cover profile onto the pressure profile to complete the Infinity screen handrail assembly.



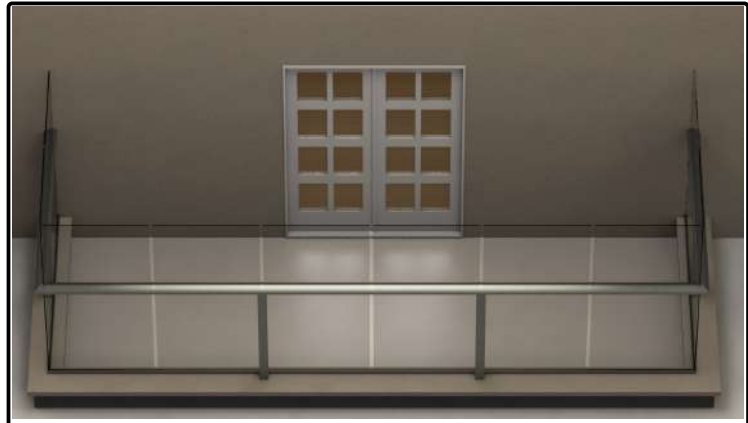
54)



55) Once the silicone has fully cured remove the temporary glazing bead pieces and gasket and install the full length bottom rail glazing bead.



56) Install the 3mm wedge gasket. Soapy water will make installation easier.

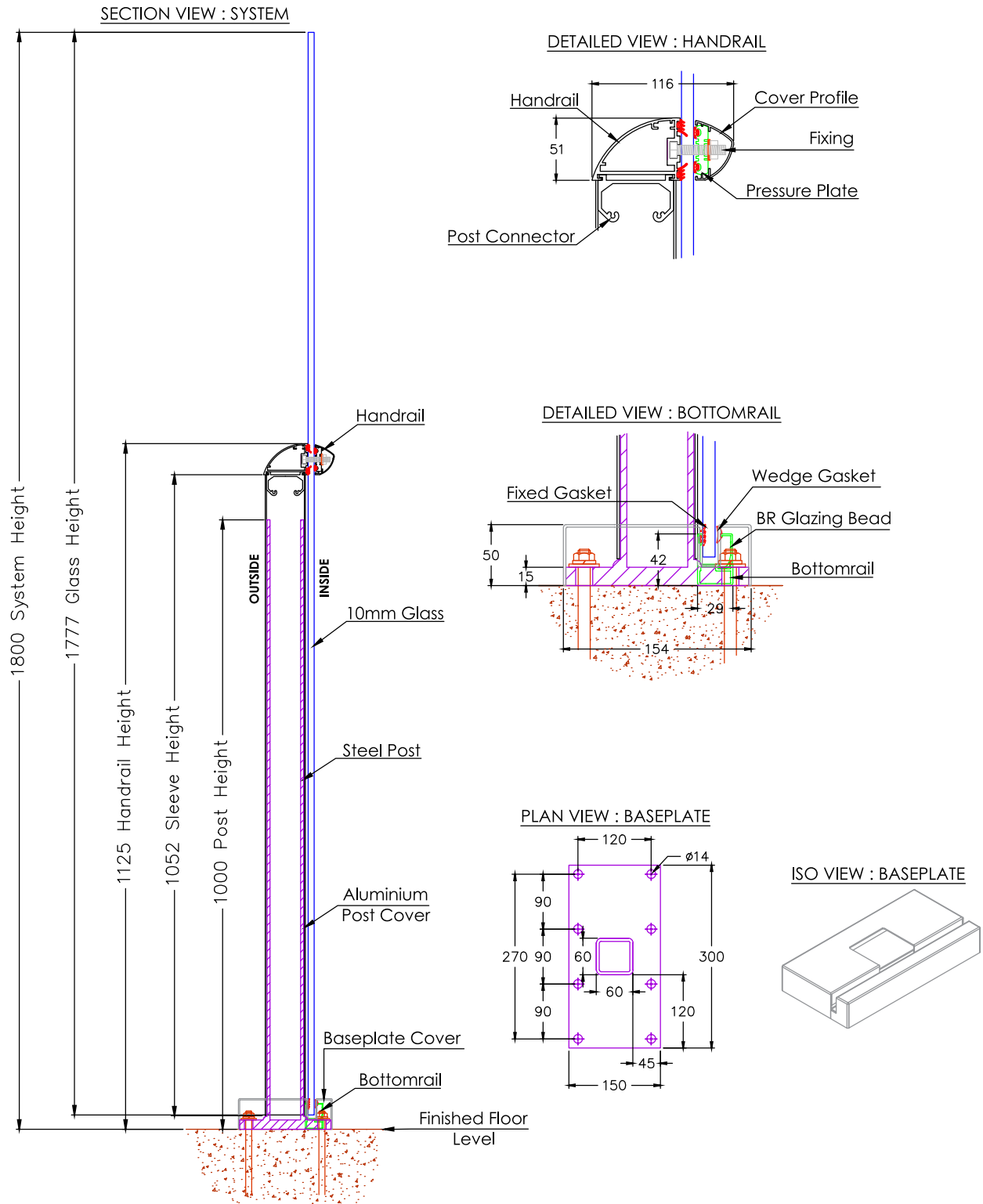


57) In this fashion install all the sections of Infinity screen in your system. Then your installation is complete.

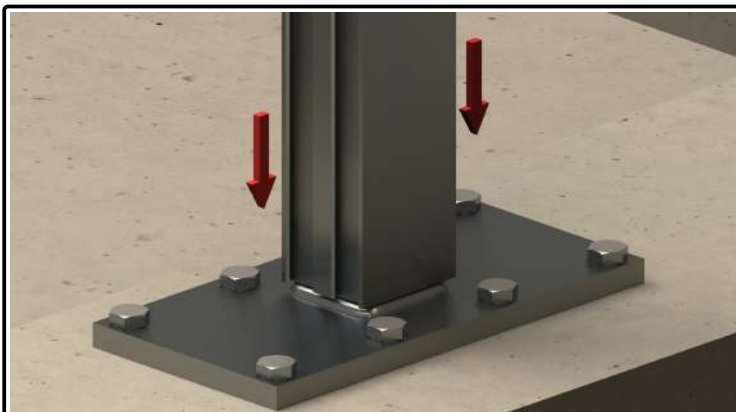
(OPTIONAL) Installation of posts Above Finished Floor Level.

The Infinity balustrade system can be ordered and made to be installed above finished floor level. In this case the system is supplied with some changes; the baseplates and posts are fitted on top of the finished floor, the bottomrails are manufactured to suit a baseplate cover, the posts sleeves are supplied slightly shorter to accommodate the baseplate height and a baseplate cover is supplied.

Infinity Balustrade - Above Finished Floor Level System Details



Skip step 17 and use this step in place of step 19 on page 04 of this guide to install the aluminium post sleeve.

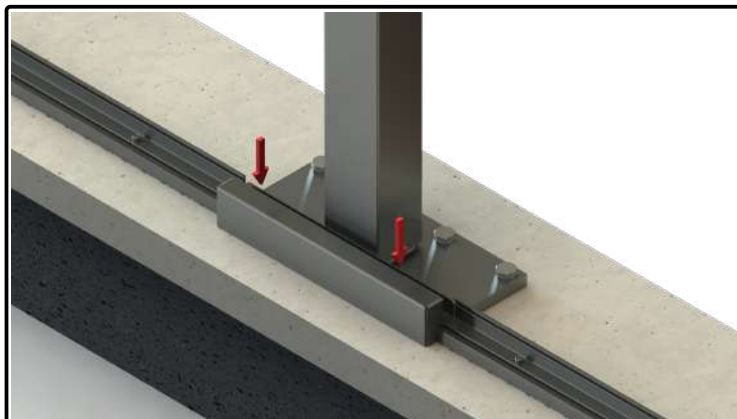


01) Slide the aluminium post sleeve over the primary post. Ensure the cover is seated onto the fillet weld so it sits 7mm above the top surface of the baseplate.

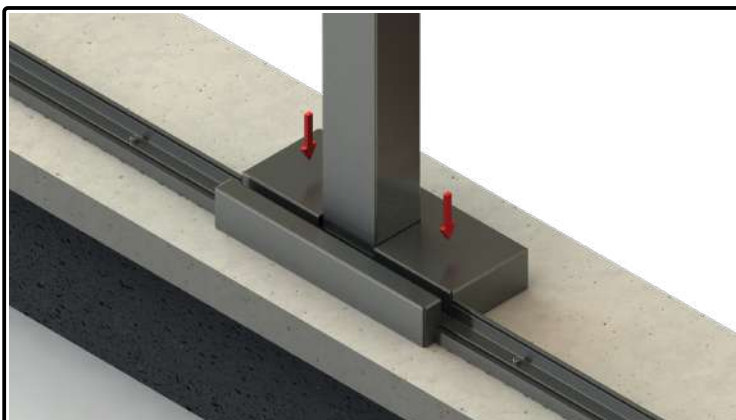
Use this installation sequence to install the baseplate covers after step 39 on page 06 of this guide.



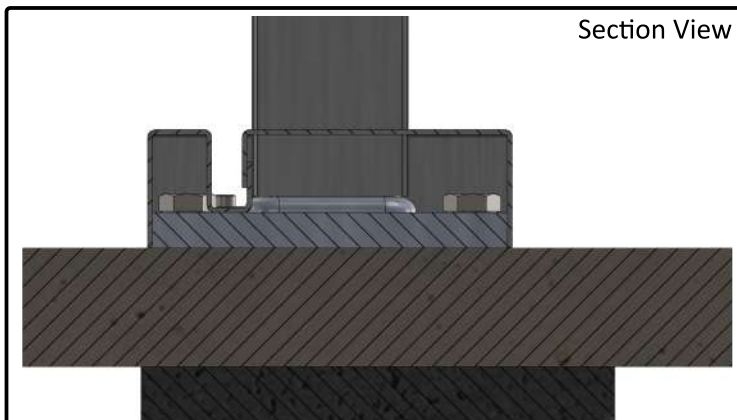
02)



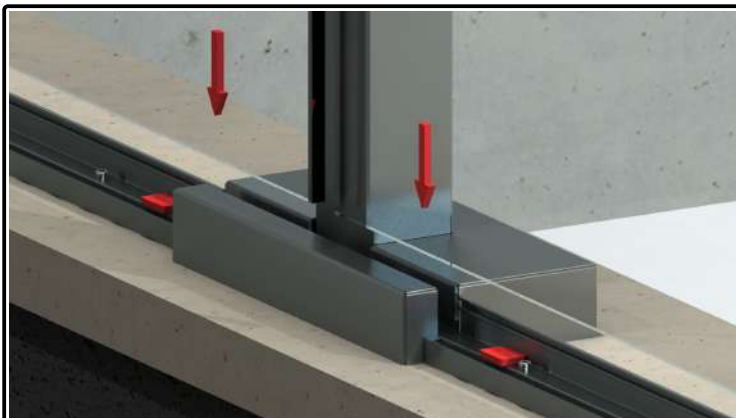
03) Slide the smaller half of the baseplate cover over the post baseplate so that the glazing channels align.



04) Slide the larger half of the baseplate cover over the post baseplate, it will interlock with the smaller part.



05)



06) When it is time to introduce the glass it must be lowered into the opening in the baseplate cover.

The Infinity system and Aerofoil Systems can be used in conjunction with each other, and their handrails are designed to connect together. This can be either on a corner or straight joint.

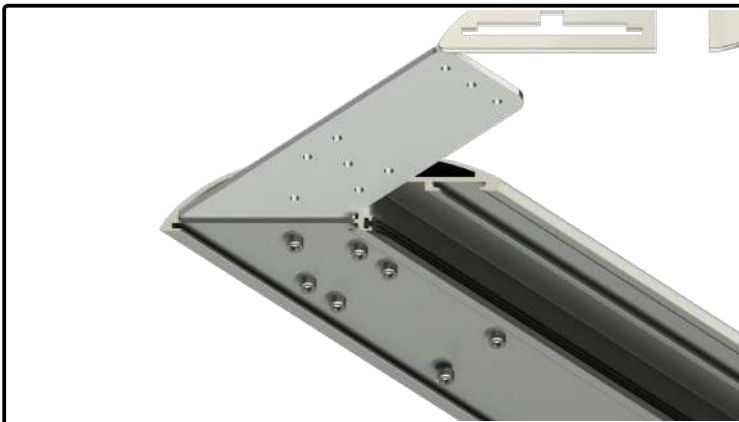
The following guide shows the corner joining of the handrails. Use these step in place of steps 02-07 on page 02 of this guide.



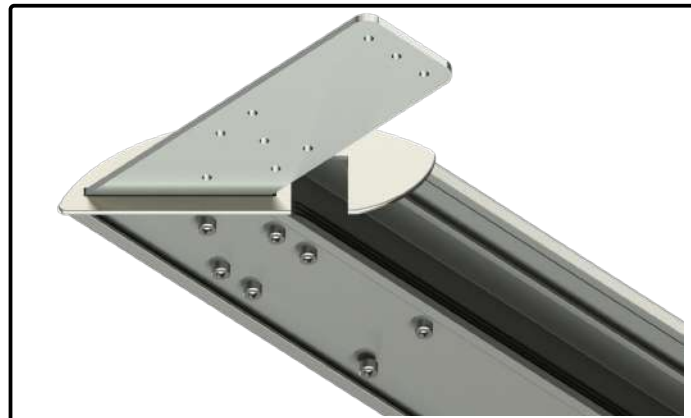
01) Prepare to assemble the handrail corner (if applicable).



02) Slide the corner bracket into the Aerofoil handrail.



03) Fix the corner bracket to the Aerofoil handrail with seven 4.8x19mm socket cap self tapping screws.



04) Slide the mitre protection plate onto the exposed corner bracket.

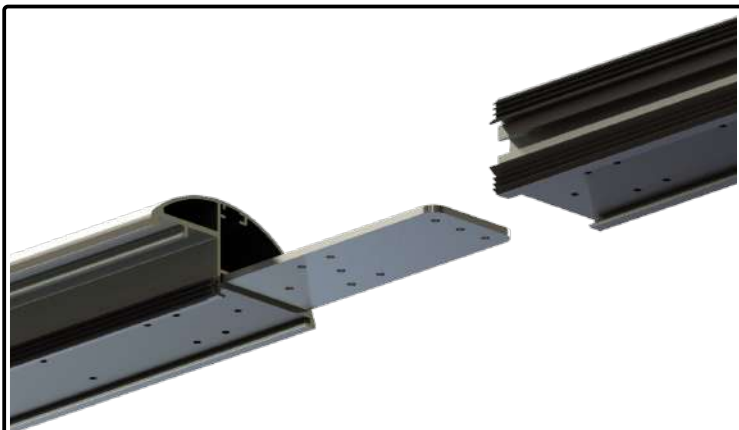


05) Slide the Infinity handrail onto the exposed bracket.

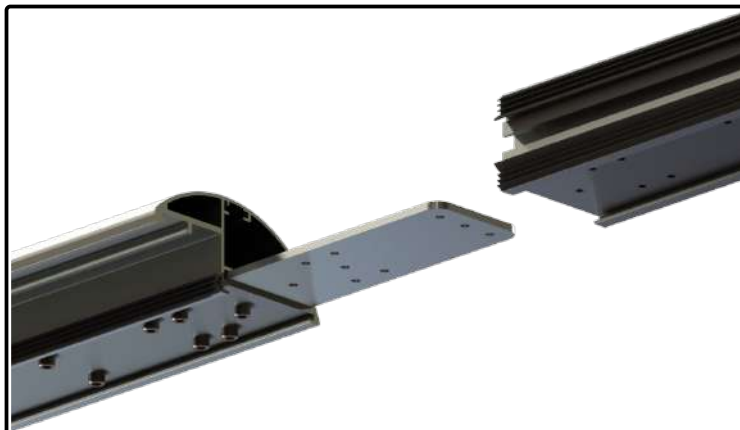


06) Fix the corner bracket to the Infinity handrail with seven 4.8x19mm socket cap self tapping screws.

The following guide shows the straight joining of the handrails. Use these step in place of steps 08-11 on pages 02-03 of this guide.



01) Slide the bracket into the Aerofoil handrail.



02) Fix the bracket to the Aerofoil handrail with seven 4.8x19mm socket cap self tapping screws.



03) Slide the Infinity handrail onto the exposed bracket.



04) Fix the bracket to the Infinity handrail with seven 4.8x19mm socket cap self tapping screws.

In the following example we have the returns featuring 1800mm high Infinity balustrade and the front section as 1125mm high Aerofoil balustrade meeting seamlessly at the corners.

