

Frameless Glass Balustrade System (SG12) Installation Guide:

Resin

[Visit the web page here](#)

The Frameless Balustrade system (SG12) for 1.5kN with 25.5mm glasses is installed using resin

Before you start:

Prepare to assemble the base track corners and/or straight joins (if applicable).

- Slide the corner bracket into one of the base track sections.
- Tighten the screws.
- Apply a bead of silicone to the cut end of the base track.
- Slide the other side of the base track onto the exposed corner bracket.
- Hold the corner or join closed and tighten the screws.
- In this fashion place all the sections in position and assemble all the base track sections together and ensure the dimensions and shape fit.
- Using the appropriate fixings, fix the base track firmly to the structure ensuring it is level.
- If the fixings are in the centre of the rail use silicone to seal around the fixings to prevent resin escaping during the resin pour.
- Once the full track is installed, check that there are no visible holes, open corners or missing end caps where resin will be able to escape from. This is easier to spot before glasses are inserted.



Frameless Glass Balustrade System (SG12) Installation Guide: Resin

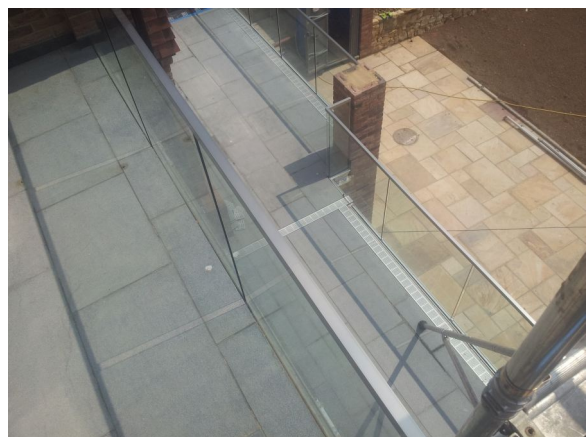
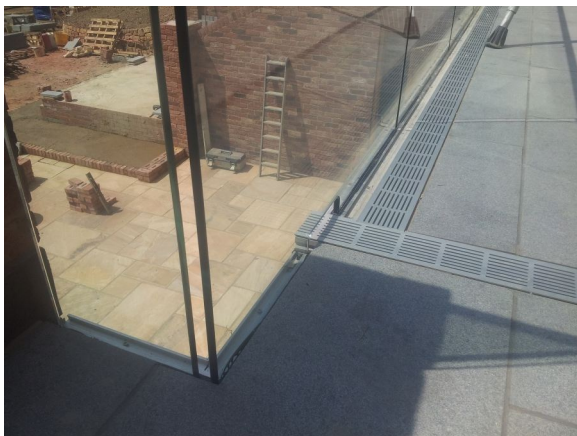
The Frameless Balustrade system (SG12) for 1.5kN with 25.5mm glasses is installed using resin

Before you start:

Prepare to assemble the base track corners and/or straight joins (if applicable).

- Slide the corner bracket into one of the base track sections.
- Tighten the screws.
- Apply a bead of silicone to the cut end of the base track.
- Slide the other side of the base track onto the exposed corner bracket.
- Hold the corner or join closed and tighten the screws.
- In this fashion place all the sections in position and assemble all the base track sections together and ensure the dimensions and shape fit.
- Using the appropriate fixings, fix the base track firmly to the structure ensuring it is level.
- If the fixings are in the centre of the rail use silicone to seal around the fixings to prevent resin escaping during the resin pour.
- Once the full track is installed, check that there are no visible holes, open corners or missing end caps where resin will be able to escape from. This is easier to spot before glasses are inserted.

Balconette





Frameless Glass Balustrade System (SG12) Installation Guide: Resin

Protection and masking:

Apply masking tape onto the glass panel level to the top of the glass trough.

Apply masking tape to the top of the glass trough.

Protect any area around the track where resin mix may flow or overflow onto or into.

- Resin information and storage:
- Please note that the resin consists of two materials, the Base and Activator. These are supplied in the correct ratio between them and this must not be altered, use complete sets; one activator container for one base container. It is important to mix the two parts very well and thoroughly as explained below.
-
- The two materials once in contact with each other create a chemical reaction; the speed of this reaction is affected by temperature. Do not mix or apply the resin if the outside temperature is below 5°C. Application when outside temperature is over 25°C can lead to an accelerated gelling time.
-
- Please store the resin mix components in a dry space, the recommended storage temperature is 15 – 25°C.
-
- Continuous low temperature (sub-zero) on the Activator component may lead to crystallisation (product starts to turn to a solid and can be difficult to return back to a liquid). Do not store the resin in sub-zero temperatures (for example leave in the car or outside on site in the colder months).



Frameless Glass Balustrade System (SG12) Installation Guide: Resin

Resin Mixing:

STEP 1. Both materials should be thoroughly homogenised prior to use. Meaning rotate the closed tins and container so the material inside gets a good mix before opening the containers. Periods of storage can lead to a degree of settlement and so this step is required.

STEP 2. Slowly add the Activator to the Base component stirring gently, scraping the sides and bottom of the container to ensure a homogenous mixture. Once the Activator is added in entirety stir for at least 2 minutes.

STEP 3. The resin system is now ready for use.

Gelling time is appx 20 - 30 mins at 25°C, gelling time will be longer when colder and faster when hotter.

Curing time is appx 24 - 48 hours.

Resin Pouring:

Pour resin along the glass trough to fill the void between the glass and base track to the top of the glass trough. It is usually best to pour in the gaps between the glasses. The mixed resin compound is quite viscous but is liquid enough to be able to be poured and slowly level itself.

As the curing time is 24 - 48 hours, the installation should not be disturbed during this time for the resin to cure completely before removing the masking and framing.

If excess resin mixture pours onto the glass or track, let it dry and cure at which time it will be easy to remove, do not wipe while still wet.



Frameless Glass Balustrade System (SG12) Installation Guide: Resin

Finalising the Installation:

After 24 - 48 hours examine the resin and ensure it has completely cured.

Once the resin has completely cured remove all additional supports added to the glasses and the masking materials.

If installing below the finished floor level complete the flooring to finalise your installation.

For further information on our products please call 01342 410411